

# Z-FOLD 8.5X11

← **BLEED:** To ensure that ink coverage goes to the edge of the final trim size, extend any graphics or artwork 1/8 in outside of the trim edge.

← **TRIM:** This is the actual cut line of your card.

← **SAFETY GUIDE:** NO Text beyond this line.

← **FOLD OR SCORE:** This is the actual fold line.

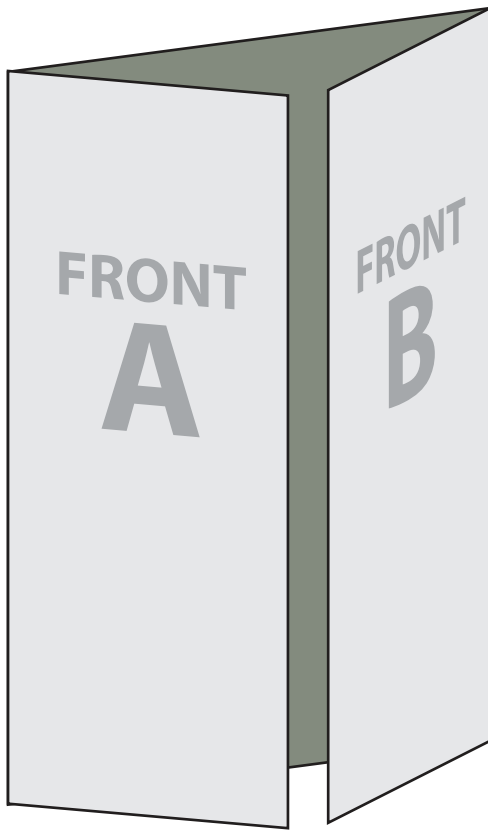
← **FOLD OR SCORE:** This is the actual fold line.

**3.532**

**3.675**

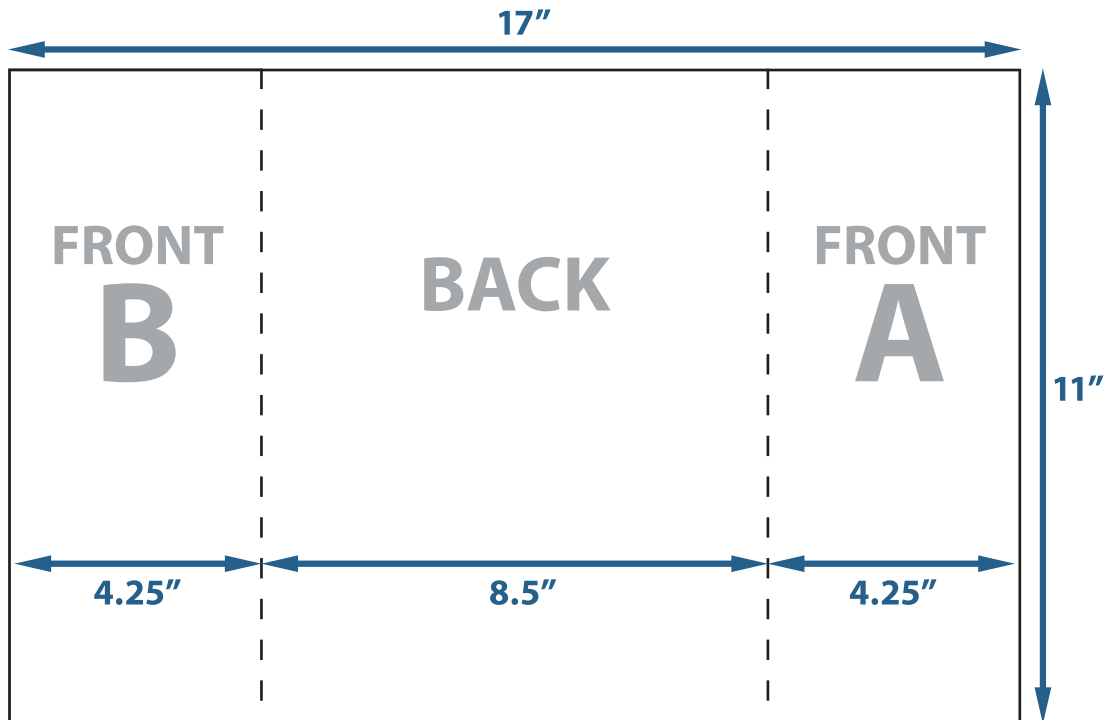
**3.532**

**FRONT PANEL  
(WHEN FOLDED)**



## Gate Fold

Standard 2-Parallel Folds, Open Center



# Accordion Fold 17x11

- ← **BLEED:** To ensure that ink coverage goes to the edge of the final trim size, extend any graphics or artwork 1/8 in outside of the trim edge.
- ← **TRIM:** This is the actual cut line of your card.
- ← **SAFETY GUIDE:** NO Text beyond this line.

← **FOLD OR SCORE:** This is the actual fold line.

← **FOLD OR SCORE:** This is the actual fold line.

← **FOLD OR SCORE:** This is the actual fold line.

4.25

4.25

4.25

4.25

**16 x 9**  
**DOUBLE PARALLEL**  
**FOLD**

**Panel 2**  
**3.969"**

**Panel 2**  
**3.969"**

**Back Cover**  
**Panel**  
**4"**

**Front Cover**  
**Panel**  
**4"**

← **FOLD OR SCORE:** This is the actual fold line.

← **FOLD OR SCORE:** This is the actual fold line.

← **FOLD OR SCORE:** This is the actual fold line.

← **BLEED:** To ensure that ink coverage goes to the edge of the final trim size, extend any graphics or artwork 1/8 in outside of the trim edge.

← **TRIM:** This is the actual cut line of your card.

← **SAFETY GUIDE:** NO Text beyond this line.

# 4 X 9 Z-FOLD

